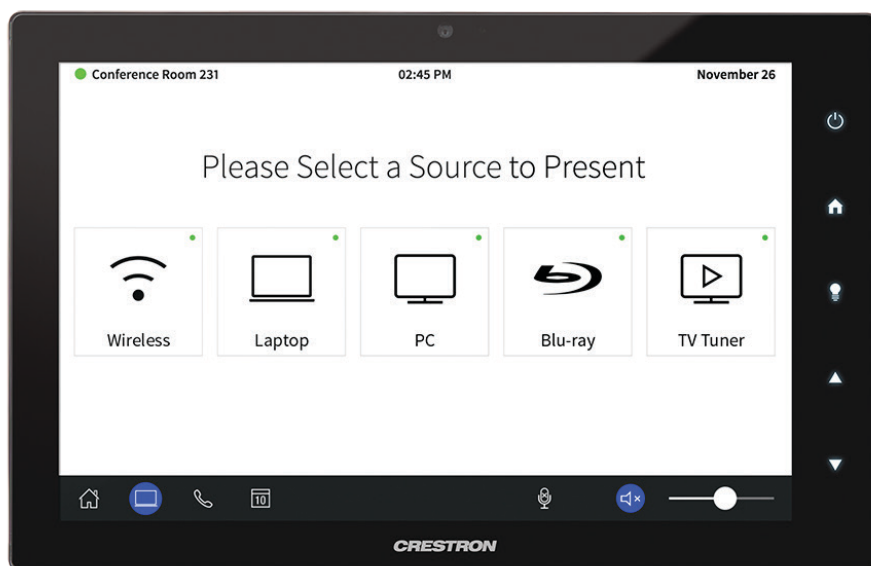


TSW-1060 Series

10.1 in. Touch Screen

- > Ultra clean, modern appearance
- > Thin profile and compact footprint
- > Affordable and easy to install
- > 10.1 in. (257 mm) widescreen active-matrix color display
- > 1280 x 800 WXGA display resolution
- > Capacitive touch screen technology
- > Multi-touch capable
- > Smart Graphics® performance
- > Backlit soft-touch capacitive buttons
- > Any/all button hide feature
- > Auto-brightness control
- > Voice recognition capability^[2,3]
- > H.264 or MJPEG streaming video display
- > Built-in 5 MP H.264 IP camera^[3]
- > Built-in microphone and speakers^[3]
- > Rava® SIP intercom and phone technology^[3]
- > Native Sonos® app^[2]
- > Zoom Rooms™ conferencing control^[9]
- > Microsoft Teams™ online meeting solution
- > Integrates directly with Crestron Fusion®, Microsoft®, Google®, Robin®, Teem®, Appspace®, Zoom™, and EMS Software™ room scheduling services^[1,6]
- > Supports IBM® Notes® and CollegeNET® 25Live® through Crestron Fusion (on-premises server only)
- > Available light bar and hallway sign options^[8]
- > Built-in PinPoint™ beacon^[3,10]
- > Customizable audio feedback
- > Control for Crestron Pyng® OS 2 system
- > Integration with supported 2N® door stations^[11]
- > Built-in web browsing^[2]
- > Multi-language support
- > On-screen keyboard
- > Customizable screensaver
- > Single-wire Ethernet connectivity
- > PoE or PoE+ network powered (refer to specifications)
- > Enterprise grade security
- > Web based configuration
- > Cloud-based provisioning and management
- > SNMP monitoring support
- > US, UK, or European electrical wall box mounting
- > Lectern mount over a rectangular cutout
- > Retrofit and masonry mounting options available^[12]
- > Multi-surface and ADA compliance mounting options available^[4]
- > Tabletop and swivel mount options available^[4]
- > 4 RU rack mount option available^[4]
- > Available in smooth black or white finish



Advanced Touch Screen Control

A Crestron® touch screen offers an ideal user interface for controlling all the technology in your home, boardroom, classroom, courtroom, or command center. Touch screens simplify and enhance the way you use technology, doing away with those piles of remote controls, cluttered wall switches, disparate smartphone apps, and cryptic computer screens. For controlling audio, video, lighting, shades, HVAC, security, and other systems, Crestron touch screens are fully-customizable with easy-to-use controls and icons, true feedback and real-time status display, live streaming video, voice recognition, web browsing, and a full-featured media player for an enhanced multiroom entertainment experience.

With its clean, contemporary design highlighted by edge-to-edge glass and stunning HD color graphics, the Crestron **TSW-1060 series** touch screen makes an elegant statement on any wall, tabletop, lectern, or equipment rack. Perfectly at home in the most contemporary residence or modern office building, its high-tech good looks underline its power for simplifying everyday tasks and functions throughout any facility.

The TSW-1060 series delivers the ultimate touch screen experience in an unobtrusive, space-saving design. It features a brilliant, high-definition 10.1 inch capacitive touch screen display with Smart Graphics® technology and 5 soft-touch buttons. PoE connectivity and a range of mounting options make installation a breeze for both new and retrofit applications. Additional advanced features include the abilities to control any function using voice commands, view security cameras and other video sources, communicate using built-in video intercom and phone capabilities, and browse the Internet. Native applications are included to enable use as a room scheduling panel, to control a **Zoom Rooms™** conferencing system or **Microsoft Teams™** online meeting solution, and to enjoy full access to a **Sonos®** Home Sound System.^[2]

For dedicated room scheduling applications, see also the **TSS-10 Series 10.1 in. Room Scheduling Touch Screen**.

TSW-1060 Series 10.1 in. Touch Screen



TSW-1060-W-S – Shown in White



TSW-1060-B-S with TSW-1060-TTK-B-S Tabletop Kit

Smart Graphics® Technology

Crestron touch screens use Smart Graphics to deliver the ultimate user experience *and* the ultimate value by enabling the creation of dynamically rich user interfaces with incredible efficiency and unparalleled functionality. Using Smart Graphics, programmers can swiftly integrate fluid gesture-driven controls, animated feedback, rich metadata, embedded apps and widgets, and full-motion video for a deeply engaging and ultra-intuitive touch screen experience.

Crestron Smart Graphics offers these enhancements and more:

- Cool-looking graphical buttons, sliders, knobs, and gauges that are intuitive and fun to use
- Kinetic effects to enhance the feeling of realism, with lists and toolbars that scroll with momentum at the flick of a fingertip
- Drag-and-drop objects that snap into place, offering an easy way to switch sources
- Dashboard widgets to personalize the touch screen with clocks, weather, news, and other information^[2]
- A power-saving screensaver that allows display of time, temperature, and other text content at a reduced brightness level
- Customizable themes allowing a completely different look and feel for every user, event, or season
- Fully-developed SmartObjects® technology that enables sophisticated control over complex devices with minimal programming
- A consistent look and feel across multiple touch screens of varying sizes

Soft-Touch Buttons

The TSW-1060 includes five backlit, soft-touch capacitive buttons for quick access to commonly used functions. These buttons are pre-labeled with icons for “Power”, “Home”, “Lights”, “Up”, and “Down” functions. Each button is programmable via the control system for custom functionality, and any unused button can be hidden by simply turning off its backlight.

Auto-Brightness Control

To ensure optimal visibility under varying lighting conditions, the TSW-1060 includes a built-in light sensor, which regulates the brightness of the display and button backlighting according to the ambient light level in the room. Separate auto-brightness settings are provided for the display and buttons to allow each to be adjusted or defeated as needed.

Voice Recognition

Some things are easier *said* than *done*, so why not just *say* what you want and let Crestron *do* it for you? With built-in voice recognition, the TSW-1060 provides the ability to use spoken commands to control virtually anything. Voice recognition can be used to quickly turn devices on or off, select and play a specific media title or playlist, change the channel, choose a lighting scene, lower the windows shades, lock the doors, arm the security system, or enter a password. Simply say a command and Crestron does the rest.^[2,3]

Streaming Video

High-performance streaming video capability makes it possible to view security cameras and other video sources right on the touch screen. Native support for H.264 and MJPEG formats allows the TSW-1060 to display live streaming video from an IP camera, a streaming encoder (Crestron [CEN-NVS200](#), [DM-TXRX-100-STR](#), or similar^[4]), or a [DigitalMedia™ switcher](#). Video is delivered to the touch screen over Ethernet, eliminating the need for any extra video wiring.

Rava® SIP Intercom

[Rava SIP Intercom Technology](#) enables hands-free VoIP communication with other Rava-enabled touch screens and door stations. Rava works over Ethernet, supporting 2-way intercom, video intercom, and paging without requiring any special wiring. VoIP phone capability is also possible through integration with a SIP-compatible IP phone system or SIP server, allowing hands-free telephone functionality complete with speed-dialing, caller ID, custom ringers, and other enhancements. Built-in echo cancellation affords full-duplex performance for clear, seamless voice communication using the TSW-1060's integrated microphone and speakers.^[3]

TSW-1060 Series 10.1 in. Touch Screen



Shown in Crestron Room Scheduling mode with optional Light Bar and Multi-Surface Mount Kit

Built-in Camera

A 5 megapixel camera is built into the TSW-1060 to support video intercom and room monitoring capabilities. This feature allows individuals to communicate both verbally and visually between two touch screens, or between one touch screen and a Rava-compatible video door station. It can also be used to visually monitor any room securely using an H.264 compatible decoder (Crestron [DM-TXRX-100-STR](#), [DM-RMC-100-STR](#), or similar ^[4]) or a third-party video monitoring system. ^[3]

Sonos® App

Merging technologies from [Sonos](#) and [Crestron](#) brings a whole-house music experience like no other. From any touch screen in the house, a family can effortlessly browse for tracks, artists, or playlists using all the services available from Sonos and instantly play them in any room using Sonos wireless speakers or a Crestron [Sonnex® Multiroom Audio System](#). The Sonos app runs natively on the TSW-1060, enabling enhanced control of Sonos products as part of a complete Crestron system. The app checks for updates nightly so it's always current. ^[2]

Room Scheduling Apps

The TSW-1060 comes with apps for all the most popular enterprise scheduling services.

- **Crestron Scheduling App** – Supports direct integration with [Crestron Fusion®](#) software, Microsoft® Exchange software (for users of Outlook® software and Office 365® software), and Google Calendar™ calendaring app (including G Suite™ software). ^[5]
- **Third-Party Apps** – Includes support for [Teem®](#), [Robin®](#), [Appspace®](#) ^[1], [Zoom™](#) and [EMS Software™](#) applications ^[6]. Other providers may be added in the future.
- **Additional Options** – Supports IBM® Notes® software and CollegeNET® 25Live® software through Crestron Fusion (on-premises server only).

Whatever provider you choose, the setup is as simple as connecting each touch screen to the network and choosing your app from the web-based setup menu. The selected app downloads from the cloud and installs on the touch screen automatically. There is no programming or control system required. ^[6]

See also the [TSS-10 Series 10.1 in. Room Scheduling Touch Screen](#) for an alternate solution.

Crestron room scheduling touch screens help organizations to maximize productivity and realize the most usable time out of every meeting space. They install at the entrance to each room to provide indication of the room's availability and a view of its schedule for the day. If the room is reserved, its touch screen displays details about the current meeting, accented in red, so attendees can immediately confirm they're in the right place before entering the room. If the room is available, the screen states so in green and shows the time remaining until the next scheduled meeting. If desired, the room can be reserved on the spot for an ad hoc meeting.

If you wish to reserve a room for later in the day, just step up to any touch screen, swipe through the room's timeline for the day, and reserve the room for any available time slot. If that room isn't available when you want it, the touch screen can find you another available room nearby. Additional optional functions include the abilities to check into a scheduled meeting, extend a meeting, end a meeting early, toggle between two languages, or limit access to various functions using PIN code authorization.

Crestron room scheduling also offers three levels of customization depending on your needs. For basic customization and branding, custom background images or videos and custom logos may be selected to personalize the standard user interface from Crestron. For editing the user interface elements further, such as changing colors, adjusting positioning, or removing elements, a custom CSS stylesheet may be created. Finally, to add entirely new user interface elements, the HTML5 coding used to create the scheduling user interface may be modified. ^[7]

Status Indicator Options

Adding the optional light bar accessory ([TSW-1060-LB Series](#)) to a TSW-1060 produces a ring of light around the perimeter of the touch screen, which can be seen with just a glance down the hallway. For room scheduling applications, the light bar provides 180° visual indication of a room's availability status, glowing green if the room is available and red when reserved. Other custom functionality is available through integration with a control system, allowing illumination of the light bar in any color. ^[8]

As an alternative to the light bar, Crestron offers a selection of hallway signs and indicators that mount on the wall or ceiling above each touch screen. The [SSW](#) and [SSC](#) series hallway signs both feature a two-sided acrylic sign face that can be custom engraved with the room name or number. The [SIW-100](#) offers a lower profile wall mount status indicator. ^[8]

Zoom Rooms™ App

The [Zoom Rooms](#) application enables the TSW-1060 to be used as a touch screen control panel for a Zoom Rooms software-based conferencing and collaboration solution. The TSW-1060 offers a superior alternative to a consumer tablet device, providing a more reliable and secure platform with versatile, streamlined options for tabletop, wall mount, and lectern mount installations. Its 10.1 in. color touch screen delivers the same user-friendly

TSW-1060 Series 10.1 in. Touch Screen

Zoom Rooms experience as a typical tablet, but without the risk of misplacing the device. Instead of Wi-Fi® communications, the TSW-1060 uses a wired Ethernet connection to ensure reliable connectivity.^[9]

The TSW-1060 may be configured to run the Zoom Rooms app exclusively, or to allow toggling between the Zoom Rooms app and regular Smart Graphics touch screen control mode. The latter allows for integrating Zoom Rooms conferencing into a larger AV system while providing control for both through one touch screen device.

Note: Zoom Ultrasonic is supported up to an average of 3 feet (1 m) from the TSW-1060 touch screen to an end user device. The range will vary based on environmental noise, the sensitivity of the end user device, and the orientation to the touch screen.

Microsoft Teams™ App

Microsoft Teams is the hub for teamwork in Office 365® software, engaging people and bringing them together through messaging, voice over IP, online meetings, conferencing, content sharing, and collaboration. The Microsoft Teams application on the TSW-1060 enables presentation, calling, conferencing, and collaboration — all through a single touch screen console, with exceptional full-duplex wideband audio and HD video. A consistent user experience in every meeting space is provided via the familiar and intuitive Microsoft Teams UI, affording simple operation, built-in calendaring, and one-touch meeting joins.

PinPoint™ Beacon (Coming Soon)

The built-in PinPoint proximity detection beacon enhances the intelligence and personalization of a Crestron system by enabling a smartphone or tablet device to always know what room it's in. It works with the [Crestron App](#) or [Crestron PinPoint App](#), using Bluetooth® technology to determine when the mobile device is in or near the same room as the beacon, and signals the mobile app to automatically display the appropriate controls and information for that location.^[3,10]

Web Browsing

Using its built-in web browser, the TSW-1060 provides access to online program guides and other web-based services at the touch of a button, allowing enhanced touch screen control of DVRs and other appliances without having to pick up a separate tablet or smartphone. The web browser may also be used to simply browse the Internet, check traffic conditions, or look up a recipe.^[2]

On-Screen Keyboard

Typing in passwords, URLs, and text searches is facilitated using the on-screen multi-language keyboard.

Multi-Touch Support

The TSW-1060's capacitive touch screen affords enhanced capabilities for browsing web pages using multi-touch gestures.

Audio Feedback

Customized audio files can be loaded to add another dimension to the touch screen graphics using personalized sounds, button feedback, and voice prompts.

Single-Wire Connectivity

A simple Ethernet LAN connection is all that is required to wire the TSW-1060, containing all control, video, intercom, and power signals within a single wire.

Power over Ethernet

Using PoE technology, the TSW-1060 gets its operating power right through the network cable. PoE (Power over Ethernet) eliminates the need for a local power supply or any dedicated power wiring. Crestron PoE switches ([CEN-SW-POE-5](#) or [CEN-SWPOE-16](#)^[4]) offer a total networking solution with built-in PoE for multiple touch screens. A PoE Injector ([PWE-4803RU](#)^[4]) is also available to support a single touch screen.

Note: PoE+ is required when connecting a light bar or hallways sign via USB. Refer to the "Power" specifications for additional details.

Enterprise Grade Security

Crestron touch screens employ enterprise-grade networking with robust security features such as 802.1X authentication, TLS encryption, HTTPS connectivity, and Active Directory® software integration. These features are imperative to protect your network against service interruptions and malicious intrusions, and to ensure compliance with your organization's stringent network policies. Cloud-based provisioning and management streamlines the process of configuring and monitoring every touch screen on the network and keeping them updated. Additional support for SNMP allows every touch screen to be monitored by your IT administrator alongside every other device on the network.

Crestron XiO Cloud™ Service

[Crestron XiO Cloud](#) is Crestron's unifying cloud-based platform for remotely provisioning, monitoring, and managing Crestron devices across an enterprise or an entire client base. Crestron XiO Cloud enables installers and IT managers to deploy and manage thousands of devices in the amount of time it would ordinarily take to manage just one. It provides a zero-touch solution that allows complete configuration of device settings without any hardware in hand, then simply connect each device on site and let Crestron XiO Cloud push out the settings, licenses, drivers, and firmware updates – automatically and securely – for a quick and painless, ready-to-use deployment.

Ongoing Crestron XiO Cloud services facilitate daily management and monitoring of every device through a single dashboard with comprehensive reporting and logging, live status viewing and alerts, performance metrics and analytics, scheduled actions and updates, and more. As requirements grow and evolve, new features and functionality can be added easily to one or many devices at any time without ever going on site. Crestron XiO Cloud is a subscription-based service offering an adaptable SaaS (Software as a Service) solution with graduated levels of functionality and unlimited scalability. For more information about Crestron XiO Cloud, please visit <https://www.crestron.com/xiocloud>.

Crestron Pyng® OS 2 Control

The TSW-1060 may be used to control a [Crestron Pyng® OS 2](#) whole home solution. After a TSW-1060 is added to a room in Crestron Pyng, a home control project is loaded directly to the touch screen. From there, the TSW-1060 allows for control over lighting, shades, climate, media, security,

TSW-1060 Series 10.1 in. Touch Screen

and cameras, including the ability to create and recall scenes that create a desired ambiance within certain rooms or for the entire home. A TSW-1060 may be installed in each room in the home to provide easy access to the room's environmental and media subsystems.

2N® Door Station Integration

The TSW-1060 may be integrated with a supported 2N® door station^[11] via the touch screen's built-in Rava® SIP intercom to provide a door station solution for Crestron Pyng. When a call is initiated on the 2N door station, the video and audio feed is displayed on the TSW-1060. Controls are provided on the touch screen to answer or decline the call, and Crestron Pyng quick actions (such as "Open Gate") may be performed while the call is in progress. A "do not disturb" option is also provided in Crestron Pyng to prevent calls from appearing on the TSW-1060.

Wall or Lectern Mounting Options

Using the bracket provided, the TSW-1060 is easily installed over a 2-gang or 3-gang US electrical box, or a 2-gang European or UK electrical box. The same bracket allows for installation in a wooden lectern or podium over a rectangular cutout. When installed, the touch screen protrudes just 1/2 inch from the mounting surface and latches firmly into its mounting bracket leaving no visible screws for an ultra clean appearance. A security latch option is included to deter unauthorized removal of the touch screen.

Additional mounting options are afforded using the [TSW-UMB-60](#) Universal Mounting Bracket. By itself, the TSW-UMB-60 provides a post-construction solution for retrofitting the TSW-1060 into existing drywall. For pre-construction applications that don't require a back box, the TSW-UMB-60 can be used along with a [TSW-UMB-60-PMK](#) Pre-Construction Mounting Kit. Masonry and concrete applications are accommodated using the TSW-UMB-60 along with a [TSW-UMB-60-BBI](#) back box. The TSW-UMB-60 is compatible with [TSW-560](#), [TSW-760](#), TSW-1060, [TSS-7](#), and [TSS-10](#) series touch screens, making it easy to swap out devices at any time.^[12]

For impenetrable surfaces, such as glass, granite, or marble, or for applications requiring ADA compliance, Crestron offers the Multi-Surface Mount Kit ([TSW-760/1060-MSMK](#)^[4]). This option allows for attaching securely to virtually any smooth, flat surface without screws, providing an ideal solution for modern offices with glass walls or historically significant spaces where cutting and drilling is prohibited. It can also be mounted over a conventional electrical box. When installed, the touch screen is angled upwards at a 20° tilt to allow for mounting at an ADA approved height.

When installing the TSW-1060 in place of an older Crestron touch screen ([APAD](#), [CT-1000](#), [LC-1000](#), [TPS-4L](#), [TPS-6L](#), [TPS-2000L](#), or [TPS-3100L](#)), Crestron offers Retrofit Mounting Brackets ([TSW-60-RMB](#) series^[4]), which facilitate replacement without having to tear out the old mounting hardware or patch the wall.

Tabletop Option

Using the optional Tabletop Kit ([TSW-1060-TTK](#)^[4]), the TSW-1060 becomes a stylish, freestanding touch screen that fits perfectly on a table, desk, or countertop. It can even be permanently attached to the surface using the optional Swivel Mount Kit ([TSW-560/760/1060-SMK](#)^[4]).

Rack Mount Option

The TSW-1060 can be mounted in a 19 in. EIA equipment rack using the optional Rack Mount Kit ([TSW-1060-RMK-2](#)^[4]). When rack mounted, the touch screen occupies four rack spaces.

SPECIFICATIONS

Touch Screen Display

Display Type: TFT active matrix color LCD

Size: 10.1 inch (257 mm) diagonal

Aspect Ratio: 16:10 WXGA

Resolution: 1280 x 800 pixels

Brightness: 400 nits (cd/m²)

Contrast: 950:1

Color Depth: 24-bit, 16.7M colors

Illumination: Edgelit LED w/auto-brightness control

Viewing Angle: ±80° horizontal, ±80° vertical

Touch Screen: Projected capacitive, 5-point multi-touch capable

Buttons

Hard Keys: (5) Projected capacitive pushbuttons, backlit w/auto-brightness control, per-button show/hide (backlight enable/disable), pre-labeled with icons for "Power", "Home", "Lights", "Up", and "Down"

Reset: (1) Miniature pushbutton on rear panel for hardware reset

Graphics Engine

Crestron Smart Graphics, multi-language web browser^[2], multi-language on-screen keyboard, screensaver, single scalable streaming video window, native Sonos app^[2], native room scheduling applications^[6], native Zoom Rooms app, native Microsoft Teams app, setup and diagnostics via web browser or onscreen UI

Room Scheduling Support

Crestron Scheduling App: Crestron Fusion, Microsoft Exchange & Office 365, Google Calendar & G Suite (IBM Notes and CollegeNET 25Live are also supported through Crestron Fusion On-premises only)^[5]

Third-Party Apps: Teem, Robin, Appspace^[1], Zoom, EMS Software^[6]

Languages

Smart Graphics: Arabic, Chinese (Simplified), Chinese (Traditional), Czech, Danish, Dutch, English (UK), English (US), Finnish, French, German, Greek, Hebrew, Hungarian, Italian, Japanese, Korean, Norwegian, Polish, Portuguese, Portuguese (Brazilian), Romanian, Russian, Slovak, Spanish, Swedish, Thai

On-Screen Keyboard: Arabic, Chinese (Simplified), Croatian, Czech, Danish, Dutch, English (UK), English (US), Finnish, French (Canada), French (Switzerland), German, Hebrew, Hungarian, Italian, Japanese, Norwegian Bokmal, Polish, Portuguese, Russian, Serbian, Spanish, Swedish, Turkish

Voice Recognition: Afrikaans (South Africa); Chinese, Mandarin (China, Simplified); Chinese, Mandarin (Hong Kong, Simplified); Chinese, Mandarin (Taiwan, Traditional); Chinese, Yue (Hong Kong, Traditional); Czech (Czech Republic); Dutch (Netherlands); English (Australia); English (Canada); English

TSW-1060 Series 10.1 in. Touch Screen

(Generic); English (India); English (New Zealand); English (South Africa); English (UK); English (US); French (France); German (Germany); isiZulu (South Africa); Italian (Italy); Japanese (Japan); Korean (South Korea); Polish (Poland); Portuguese (Brazil); Russian (Russia); Spanish (Spain); Turkish (Turkey)

Web Browser: Arabic, Bulgarian, Catalan, Chinese, Croatian, Czech, Danish, Dutch, English, Filipino, Finnish, French, German, Greek, Hebrew, Hindi, Hungarian, Indonesian, Italian, Japanese, Korean, Latvian, Lithuanian, Norwegian Bokmal, Pashto, Persian, Polish, Portuguese, Romanian, Romansh, Russian, Serbian, Slovak, Slovenian, Spanish, Swedish, Thai, Turkish, Ukrainian, Vietnamese

Room Scheduling: Chinese (Simplified), Chinese (Traditional), Danish, Dutch (Netherlands), English (US), English (UK), French, German, Hebrew, Italian, Japanese, Korean, Norwegian, Portuguese (Brazil), Portuguese (Portugal), Russian, Spanish, Swedish

Memory

RAM: 2 GB DDR3L

Storage: Firmware/Application: 4 GB Class 10 microSD card;
System: 4 GB eMMC

Maximum Project Size: 600 MB

Communications

Ethernet: 10/100 Mbps, auto-switching, auto-negotiating, auto-discovery, full/half duplex, TCP/IP, UDP/IP, CIP, DHCP, SSL, TLS, SSH, SFTP (SSH File Transfer Protocol), IEEE 802.1X, SNMP, IPv4 or IPv6, Active Directory authentication, HTTPS web browser setup, Crestron XiO Cloud client, IEEE 802.3at compliant

USB: USB 2.0 host for room availability light bar or hallway sign^[8]

Bluetooth: Crestron PinPoint proximity detection beacon^[3,10]

Streaming Decoder

Video Formats: H.264 (MPEG-4 part 10 AVC), MJPEG

Audio Formats: AAC stereo

Bitrates: Up to 25 Mbps (20 Mbps maximum recommended)

Streaming Input Resolutions: Up to 1920x1080@30fps

Streaming Protocol: RTSP

Streaming Encoder & Camera^[3]

Camera Resolution: 5.0 MP

Field of View: 50° horizontal

Video Format: H.264 (MPEG-4 part 10 AVC)

Streaming Output Resolution: 1280x720

Streaming Protocol: RTSP, ONVIF discovery

Audio

Features: Built-in microphone and speakers, Rava SIP Intercom, multi-language voice recognition^[2,3]

Audio Feedback Formats: MP3

Connectors

LAN PoE: (1) 8-pin RJ45 connector, female, with 2 LED indicators; 10Base-T/100Base-TX Ethernet port and PoE+ PD port;

Green and yellow LEDs indicate Ethernet port status

USB: (1) USB Type A connector, female; USB 2.0 host port; For optional room availability light bar or hallway sign^[8]

Power

Power over Ethernet:

IEEE 802.3at Type 2 compliant PoE+ PD (Powered Device);

- Normally requests 15 Watts from an 802.3at Type 2 PSE with LLDP advanced power management;

- With room scheduling and USB enabled, requests 18 Watts from an 802.3at Type 2 PSE with LLDP;

- Requests 30 Watts (PoE+ Class 4) from an 802.3at Type 2 PSE without LLDP;

- Requests 15.4 Watts (PoE Class 0) from an 802.3af (or 802.3at Type 1) PSE

Note: Enabling the USB port requires use of an 802.3at Type 2 PoE+ PSE.

Environmental

Temperature: 32° to 112° F (0° to 45° C)

Humidity: 10% to 90% RH (non-condensing)

Heat Dissipation: 44 BTU/hr

Construction

Housing: Plastic, smooth black or white finish, edge-to-edge glass with black or white surround

Mounting: Surface mount over a 2 or 3-gang US electrical box, 2-gang European (DIN 49073) electrical box, or 2-gang UK (BS 4662) electrical box;

Lectern mount over a 2-1/5 in. H x 3-3/4 in. W
(56 mm H x 96 mm W) cutout;

1-3/8 in. (35 mm) minimum mounting depth;

Additional wall mount, surface mount, rack mount, and tabletop options available separately

Dimensions

Height: 6.59 in. (168 mm)

Width: 10.23 in. (260 mm)

Depth: 1.52 in. (39 mm)

Dimensions do not include the mounting bracket or add-on accessories

Weight

23.9 oz (675 g)

Compliance

UL Listed for US & Canada, IC, CE, FCC Part 15 Class B digital device

Notes:

1. Appspace functionality is currently limited to their Room Management feature (aka, room cards or meeting cards) only.
2. Voice recognition, web browsing, weather information, Sonos app, and certain other functions require an Internet connection.

TSW-1060 Series 10.1 in. Touch Screen

3. The camera, microphone, and Bluetooth transceiver may each be defeated programmatically at any time. For applications demanding an extra measure of privacy, Crestron offers models [TSW-1060-NC-B-S](#) and [TSW-1060-NC-W-S](#), which have no physical camera, microphone, or Bluetooth transceiver installed.
4. Item(s) sold separately. Refer to each product's spec sheet for complete information.
5. Room Scheduling Mode requires the TSW-1060 to be designated exclusively for room scheduling use, which precludes use of certain features and functions described in this spec sheet. For design assistance, contact the Crestron True Blue support team at <https://www.crestron.com/support>.
6. Additional subscriptions and/or licenses may be required. Refer to each provider's website for details about the capabilities and requirements of its scheduling application and services. Third-party apps typically run on the TSW-1060 as they do on a tablet device. The TSW-1060 runs only one app, which is selected at setup. Only the apps approved and delivered by Crestron can run on the TSW-1060.
7. For more information on custom programming for the Crestron room scheduling app, refer to the Crestron Room Scheduling Panels Programming Guide (Doc. 8213) at www.crestron.com/manuals.
8. The light bar and hallway sign accessories are sold separately. The TSW-1060 must be powered by a PoE+ power source when a light bar or hallway sign is connected. Only one light bar or hallway sign may be connected to the TSW-1060. Use of either accessory precludes use of the other without the addition of a custom-programmed control system and Cresnet wiring for the hallway sign. Refer to the Accessories section for a list of all available options. Refer to each accessory's spec sheet for further information.
9. A complete Zoom Rooms solution requires a mini PC or Mac computer running Zoom software, a Zoom Rooms subscription, plus additional peripherals and cables. Visit <https://zoom.us/zoomrooms> for more information about Zoom Rooms capabilities, hardware requirements, and subscription plans. For design assistance, contact the Crestron True Blue support team at <https://www.crestron.com/support>.
10. Onboard PinPoint beacon functionality is not currently supported and will be enabled through a future update. When enabled, the TSW-1060 will provide an integrated, equivalent alternative to the standalone PP-100-W beacon. For more details, refer to the [PP-100-W](#) spec sheet. Bluetooth technology is used solely for proximity detection and does not transmit or receive any control, multimedia, or personal data. PinPoint beacons are only visible to Bluetooth enabled devices that are specifically programmed and configured to work with them.
11. Supported 2N door stations include the 2N IP Audio Kit, 2N IP Audio Kit Lite, 2N IP Base, 2N IP Force, 2N IP Safety, 2N IP Solo, 2N IP Uni, 2N IP Vario, 2N IP Verso, and 2N IP Video Kit. For pairing instructions, refer to the Crestron Pyng OS 2 for CP3-R Product Manual (Doc. 8356) and the TSW-560/TSW-760/TSW-1060 Supplemental Guide (Doc. 7927) at www.crestron.com/manuals.
12. The [TSW-UMB-60](#), [TSW-UMB-60-PMK](#), and [TSW-UMB-60-BBI](#) are all sold separately. The TSW-UMB-60 is also compatible with older [TSW-UMB-PMK](#) preconstruction mounting kits and [TSW-550-BBI](#) back boxes, allowing the TSW-1060 touch screen to be installed in place of a previous generation TSW-5xx series touch screen, or any other device that was originally installed using a TSW-UMB-PMK or TSW-550-BBI, without modification to the wall. If replacing another older Crestron device, use the appropriate [TSW-60-RMB](#) retrofit mounting bracket (sold separately).

This product may be purchased from an authorized Crestron dealer. To find a dealer, please contact the Crestron sales representative for your area. A list of sales representatives is available online at <https://www.crestron.com/How-To-Buy/Find-a-Representative> or by calling 855-263-8754.

The specific patents that cover this and other Crestron products are listed online at <https://www.crestron.com/legal/patents>.

Certain Crestron products contain open source software. For specific information, visit <https://www.crestron.com/opensource>.

Crestron, the Crestron logo, Crestron Fusion, Crestron Pyng, Crestron XiO Cloud, DigitalMedia, PinPoint, Rava, Smart Graphics, SmartObjects, and Sonnex are either trademarks or registered trademarks of Crestron Electronics, Inc. in the United States and/or other countries. 2N is either a trademark or a registered trademark of 2N Telekomunikace in the United States and/or other countries. Appspace is either a trademark or registered trademark of AppSpace, Inc. in the United States and/or other countries. Bluetooth is either a trademark or registered trademark of Bluetooth SIG, Inc. in the United States and/or other countries. CollegeNET and 25Live are either trademarks or registered trademarks of CollegeNET, Inc. in the United States and/or other countries. EMS Software is either a trademark or registered trademark of EMS Software LLC in the United States and/or other countries. Google, G Suite, and Google Calendar are either trademarks or registered trademarks of Google LLC in the United States and/or other countries. IBM and Notes are either trademarks or registered trademarks of International Business Machines Corporation in the United States and/or other countries. Microsoft, Active Directory, Microsoft Teams, Office 365, and Outlook are either trademarks or registered trademarks of Microsoft Corporation in the United States and/or other countries. Robin is either a trademark or registered trademark of Robin

Powered, Inc. in the United States and/or other countries. Sonos is either a trademark or registered trademark of Sonos, Inc. in the United States and/or other countries. Teem is either a trademark or registered trademark of Teem Technologies, Inc. in the United States and/or other countries. Wi-Fi is either a trademark or registered trademark of Wi-Fi Alliance in the United States and/or other countries. Zoom and Zoom Rooms are either trademarks or registered trademarks of Zoom Video Communications, Inc. in the United States and/or other countries. Other trademarks, registered trademarks, and trade names may be used in this document to refer to either the entities claiming the marks and names or their products. Crestron disclaims any proprietary interest in the marks and names of others. Crestron is not responsible for errors in typography or photography. Specifications are subject to change without notice.

©2018 Crestron Electronics, Inc.

MODELS & ACCESSORIES

Available Models

TSW-1060-B-S: 10.1 in. Touch Screen, Black Smooth
TSW-1060-W-S: 10.1 in. Touch Screen, White Smooth

Available Accessories

TSW-1060-TTK Series: Tabletop Kit
TSW-560/760/1060-SMK: Swivel Mount Kit for TSW-1060-TTK Series
TSW-UMB-60: Universal Mounting Bracket for TSW-x60 Series
TSW-UMB-60-PMK: Pre-Construction Mounting Kit for TSW-UMB-60
TSW-UMB-60-BBI: Wall Mount Back Box for TSW-UMB-60
TSW-760/1060-RMB-1: Retrofit Mounting Bracket – Converts APAD, CT/LC-1000, or TPS-2000L to TSW-1060
TSW-760/1060-RMB-2: Retrofit Mounting Bracket – Converts TPS-4L to TSW-1060
TSW-1060-RMB-3: Retrofit Mounting Bracket – Converts TPS-6L to TSW-1060
TSW-1060-RMB-4: Retrofit Mounting Bracket – Converts TPS-3100L to TSW-1060
TSW-760/1060-MSMK Series: Multi-Surface Mount Kit
TSW-560/760-RMK-2: Rack Mount Kit
PWE-4803RU: PoE Injector
CEN-SW-POE-5: 5-Port PoE Switch
CEN-SWPOE-16: 16-Port Managed PoE Switch
CEN-NVS200: Network Video Streamer
DM-TXRX-100-STR: HD Streaming Transmitter/Receiver
DM-RMC-100-STR: HD Streaming Receiver & Room Controller 100
SW-XIOC-S Series: Crestron XiO Cloud™ Standard Provisioning and Management Service for one device
SW-XIOC-P Series: Crestron XiO Cloud™ Premium Provisioning and Management Service for one device
SW-FUSION-C-3: Crestron Fusion® Cloud; 250 rooms; 3-year service, support, and updates
SW-FUSION-P-L: Crestron Fusion® On-premises; Unlimited rooms; lifetime service, support, and updates
SW-HS-x-C Series: Crestron Fusion® Cloud Room Scheduling for one touch screen
SW-HS-x-P Series: Crestron Fusion® On-premises Room Scheduling for one touch screen
TSW-1060-LB Series: Room Availability Light Bar
SSC Series: Room Availability Hallway Sign, Ceiling Mount
SSW Series: Room Availability Hallway Sign, Wall Mount
SIW-100: Room Availability Status Indicator, Wall Mount

TSW-1060 Series 10.1 in. Touch Screen

